

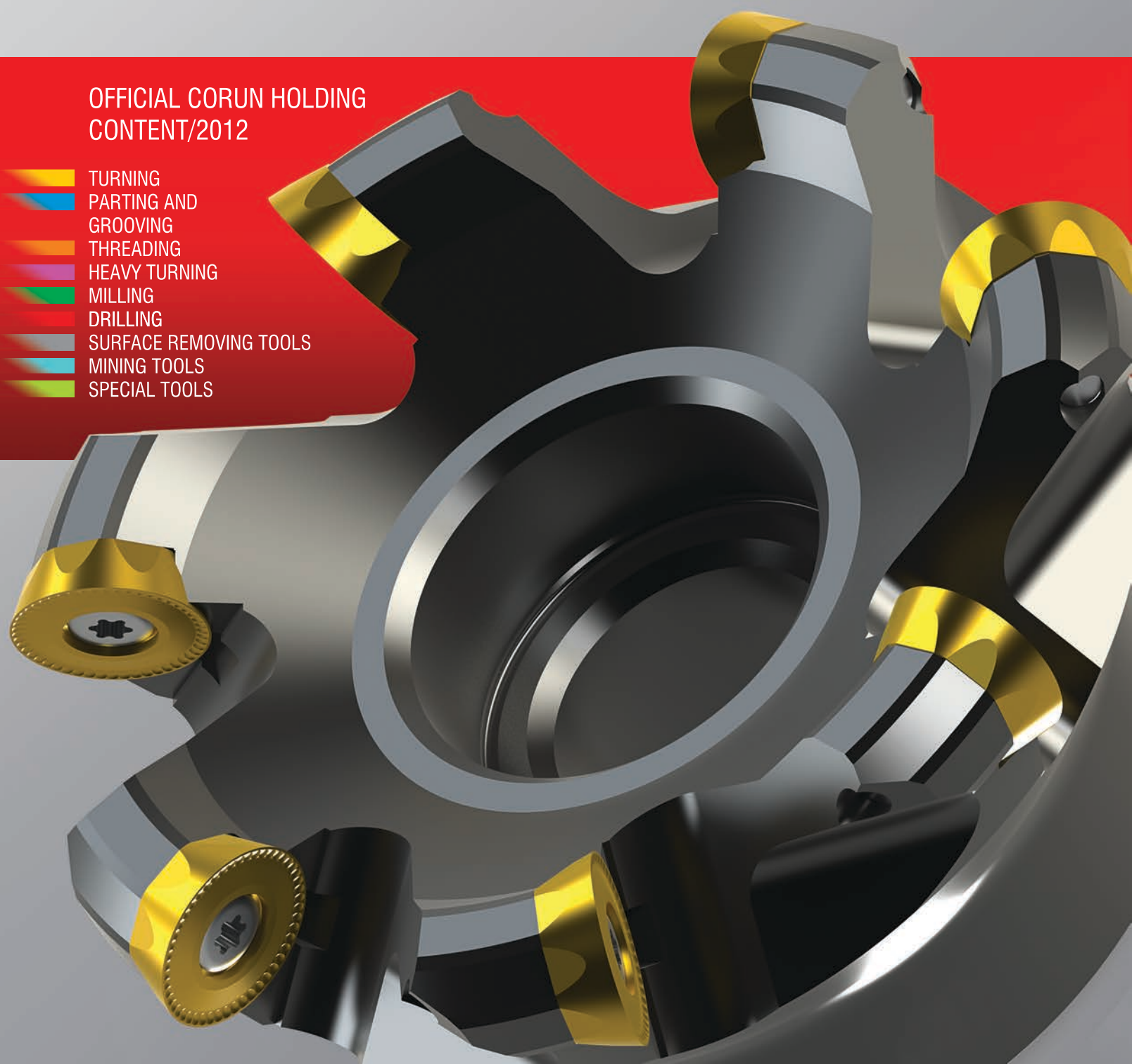


CATALOGUE/2012

THE COMPLETE RANGE OF PRODUCTS

OFFICIAL CORUN HOLDING
CONTENT/2012

-  TURNING
-  PARTING AND GROOVING
-  THREADING
-  HEAVY TURNING
-  MILLING
-  DRILLING
-  SURFACE REMOVING TOOLS
-  MINING TOOLS
-  SPECIAL TOOLS



SURFACE REMOVING TOOLS

G.a Top of picks



C1-02

A.a2



C1-00

A.a2



C1-01

A.a2



C2-00

A.a2



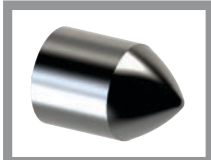
C2-01

A.a2



C3-00

A.a3



C4-01

A.a3



C4-00

A.a3



C7-00

A.a3



C7-01

A.a3



C7-02

A.a4



C9-00

A.a4



G26 ...1-TS

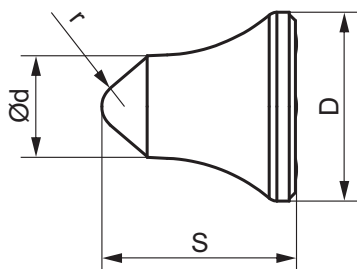
A.a4

G

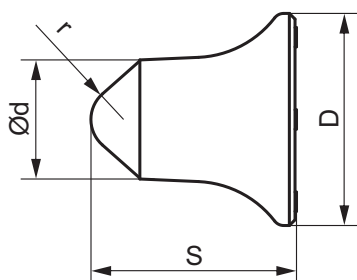
**G
a1**

SURFACE REMOVING TOOLS

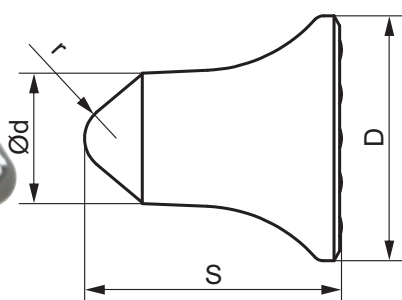
G.a Top of picks



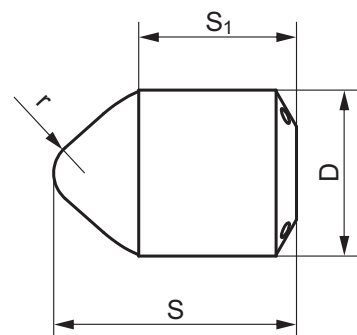
Ordering code	Grades			Dimensions			
	C08			Ød	D	S	r
C1-02	●			8.4	15.6	16.0	2.0



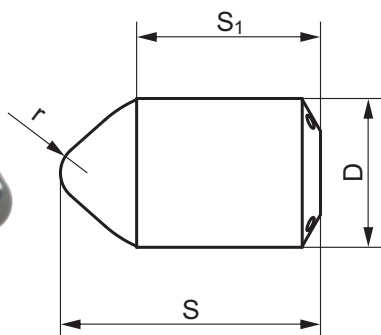
Ordering code	Grades			Dimensions			
	C08			Ød	D	S	r
C1-00	●			10.5	18.7	18.0	3.0



Ordering code	Grades			Dimensions			
	C08			Ød	D	S	r
C1-01	●			11.5	21.6	23.5	3.0



Ordering code	Grades			Dimensions			
	C08			S ₁	D	S	r
C2-00	●			11.7	12.0	18.0	2.5



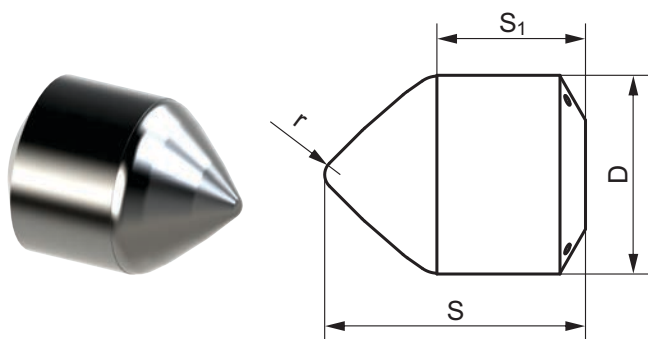
Ordering code	Grades			Dimensions			
	C08			S ₁	D	S	r
C2-01	●			15.2	12.0	21.5	2.5

● First choice ◐ Second choice

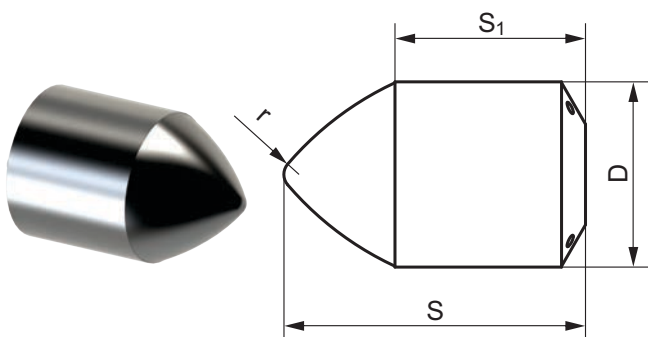
G

SURFACE REMOVING TOOLS

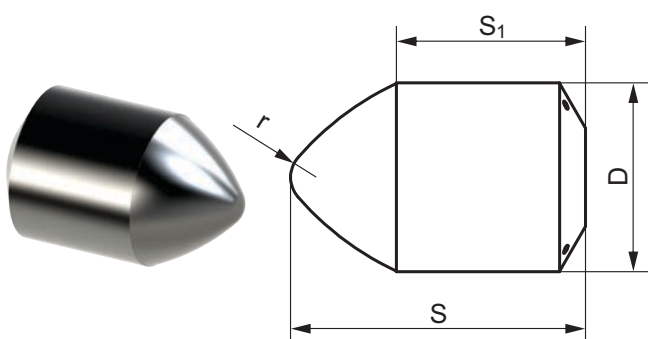
G.a Top of picks



Ordering code	Grades				Dimensions			
	C08				S ₁	D	S	r
C3-00	●				16.4	22.0	29.0	1.8

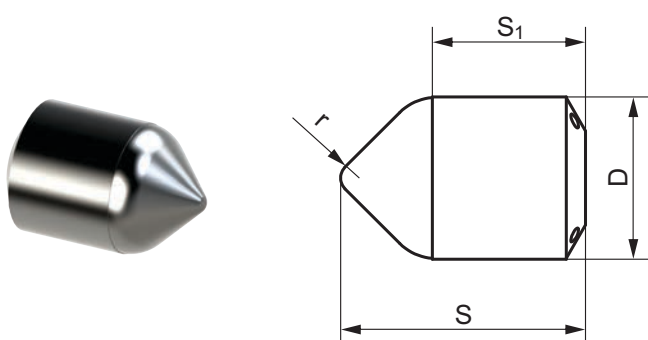


Ordering code	Grades				Dimensions			
	C08				S ₁	D	S	r
C4-01	●				18.0	17.5	28.5	1.5

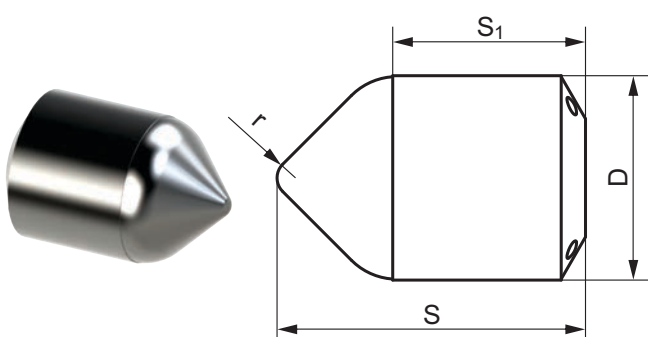


Ordering code	Grades				Dimensions			
	C08				S ₁	D	S	r
C4-00	●				25.0	25.0	39.0	4.0

G



Ordering code	Grades				Dimensions			
	C08				S ₁	D	S	r
C7-00	●				12.0	9.0	17.0	1.5

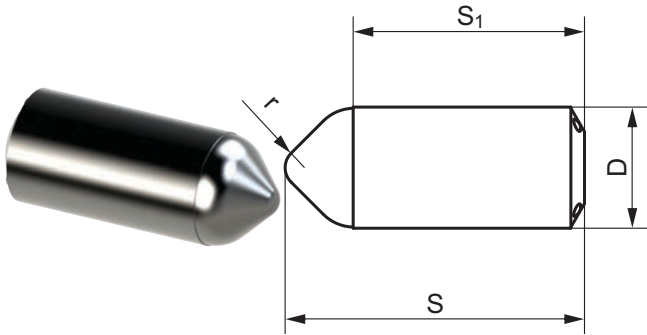


Ordering code	Grades				Dimensions			
	C08				S ₁	D	S	r
C7-01	●				24.0	16.0	24.0	1.5

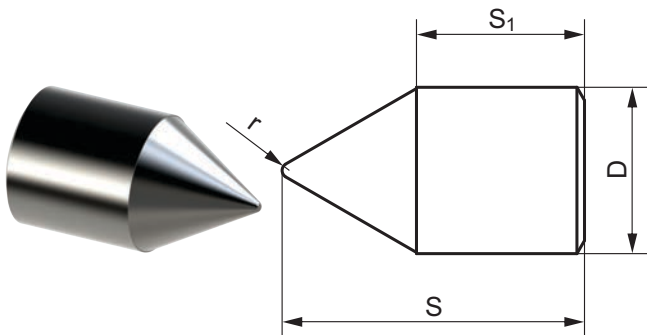
● First choice ◐ Second choice

SURFACE REMOVING TOOLS

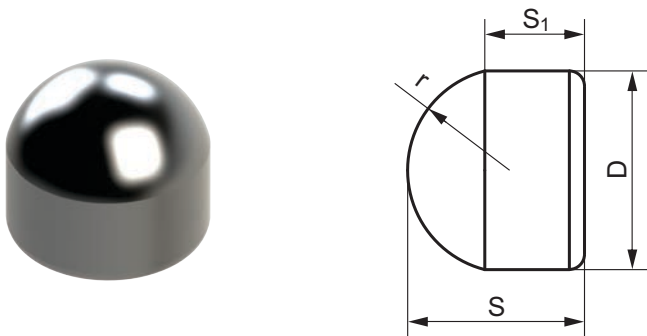
G.a Top of picks



Ordering code	Grades				Dimensions			
	C08				S ₁	D	S	r
C7-02	●				17.0	8.9	22.0	1.5



Ordering code	Grades				Dimensions			
	C08				S ₁	D	S	r
C9-00	●				11.1	11.0	20.0	0.5



Ordering code	Grades				Dimensions			
	C08				S ₁	D	S	r
G26 13x12-5.1-TS	●				6.5	13.1	11.7	6.7

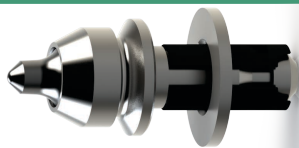
● First choice ◐ Second choice

G

SURFACE REMOVING TOOLS

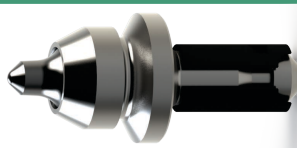
G.b The complete range of picks for the mining industry

G.c Picks for asphalt removing



CD-1719-C1-01

G.c1



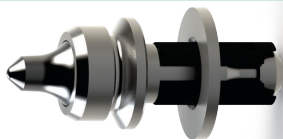
CD-1719-C1-06

G.c1



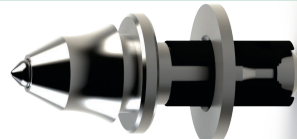
CD-1719-C1-11

G.c1



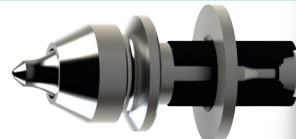
CD-1722-C1-23

G.c2



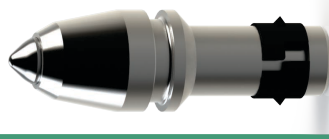
CD-1709-C7-21

G.c2



CD-1716-C1-24

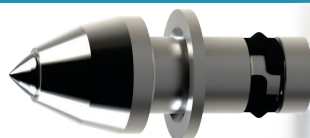
G.c2



CD-1712-C2-22

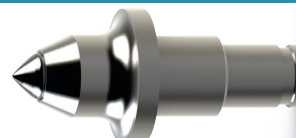
G.c3

G.d Picks for mining



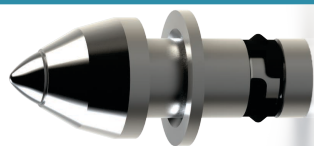
CD-3822-C3-07

G.d1



CD-3022-C3-25

G.d1



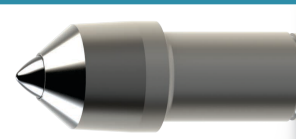
CD-3825-C4-10

G.d1



CD-3318-C4-12

G.d2



CD-5225-C4-12

G.d2



CD-3322-C3-02

G.d2

G.e Picks for canal digging



CD-2019-C1-05

G.e1



CD-2019-C2-04

G.e1



CD-2012-C2-09

G.e1



CD-2518-C4-08

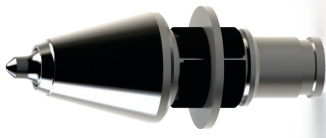
G.e2

G.f Picks for digging of loose materials



CD-3319-C1-02

G.f1



CD-3219-C1-03

G.f1

G.g Picks for digging of loose materials



CD-1719K-C2-14W

G.g1

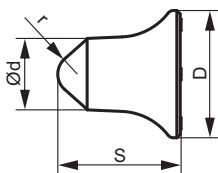
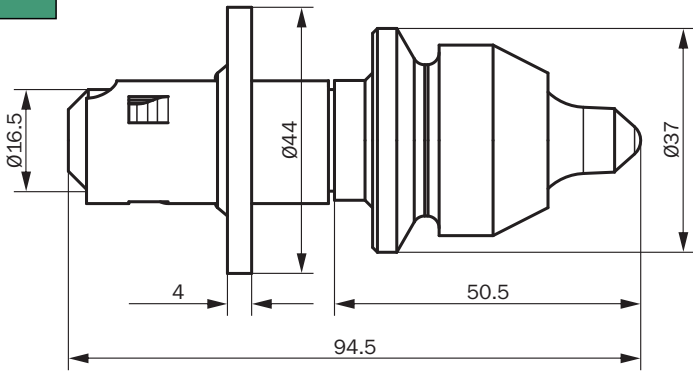
G

G
b1

SURFACE REMOVING TOOLS

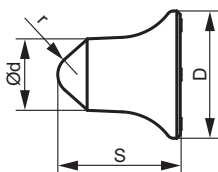
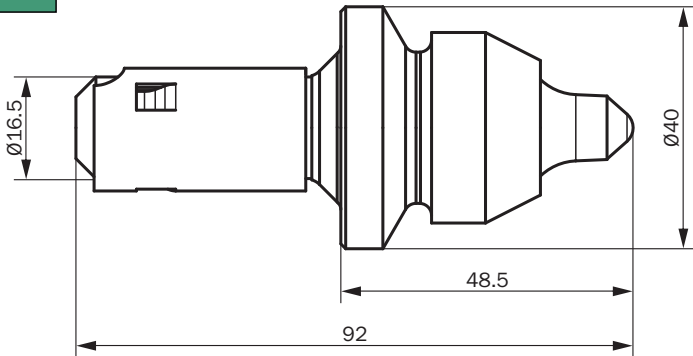
G.c Picks for asphalt removing

CD-1719-C1-01



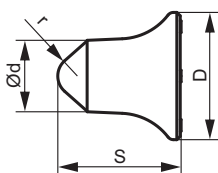
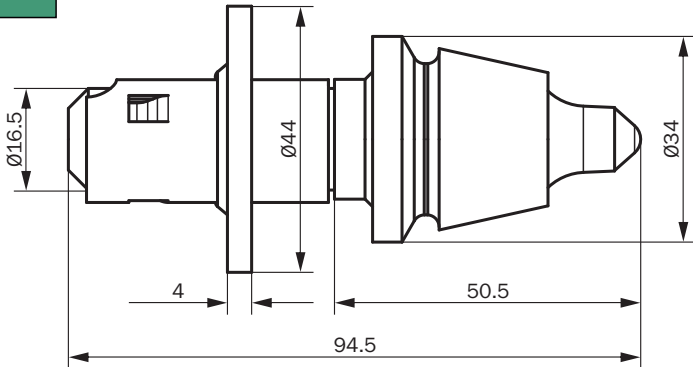
Ordering code	Grades				Dimensions			
	C08				Ød	D	S	r
C1-00	●				10.5	18.7	18.0	3.0

CD-1719-C1-06



Ordering code	Grades				Dimensions			
	C08				Ød	D	S	r
C1-00	●				10.5	18.7	18.0	3.0

CD-1719-C1-11



Ordering code	Grades				Dimensions			
	C08				Ød	D	S	r
C1-00	●				10.5	18.7	18.0	3.0

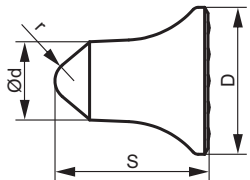
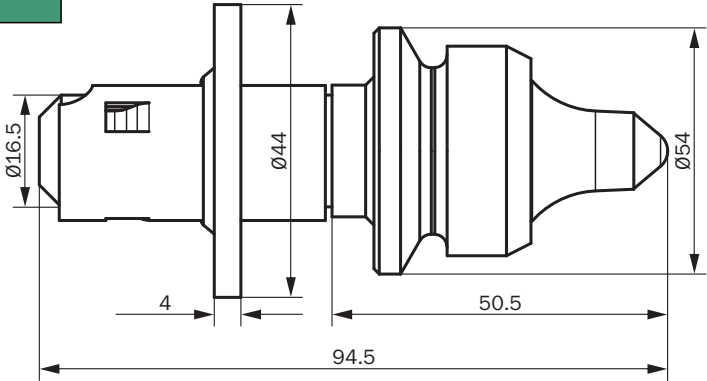
G

G
c1

SURFACE REMOVING TOOLS

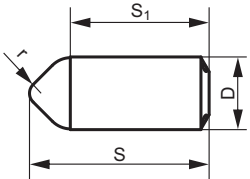
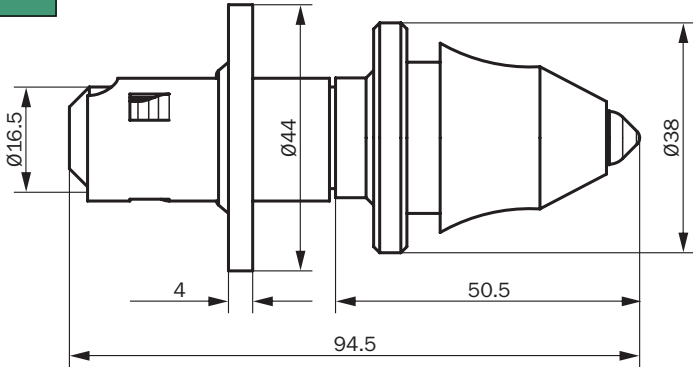
G.c Picks for asphalt removing

CD-1722-C1-23



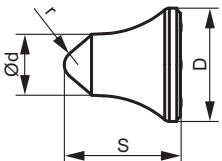
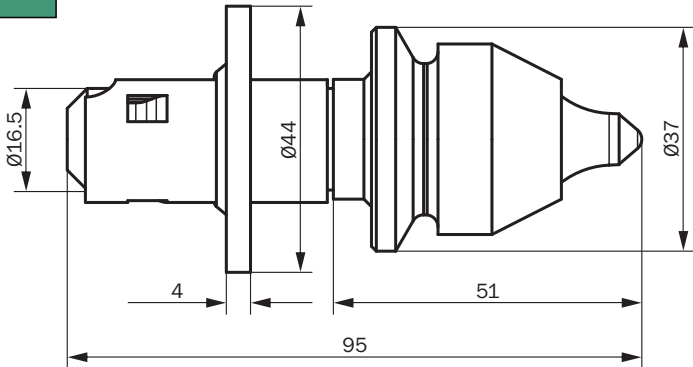
Ordering code	Grades				Dimensions			
	C08				Ød	D	S	r
C1-01	●				11.5	21.6	23.5	3.0

CD-1709-C7-21



Ordering code	Grades				Dimensions			
	C08				S ₁	D	S	r
C7-02	●				17.0	8.9	22.0	1.5

CD-1716-C1-24



Ordering code	Grades				Dimensions			
	C08				Ød	D	S	r
C1-02	●				8.4	15.6	16.0	2.0

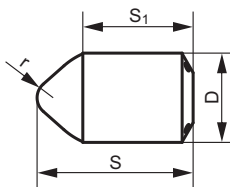
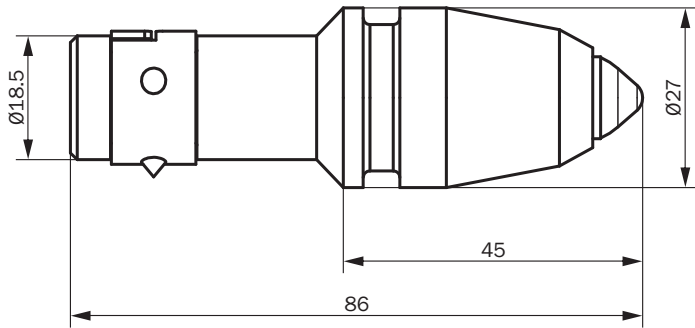
G

G
c2

SURFACE REMOVING TOOLS

G.c Picks for asphalt removing

CD-1712-C2-22

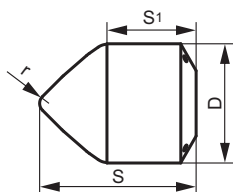
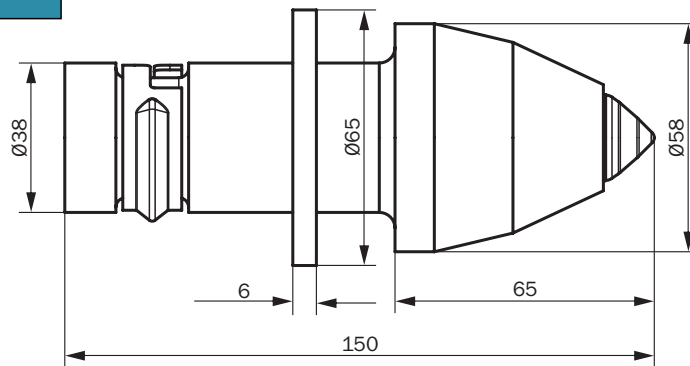


Ordering code	Grades				Dimensions				
	C08				S_1	D	S	r	
C2-01	●				15.2	12.0	21.5	2.5	

SURFACE REMOVING TOOLS

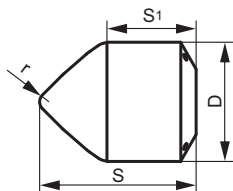
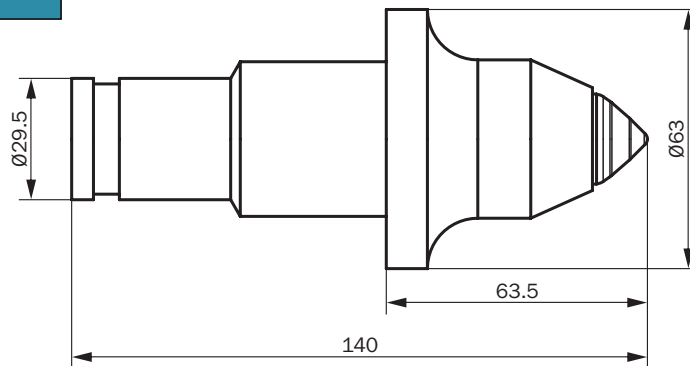
G.d Picks for mining

CD-3822-C3-07



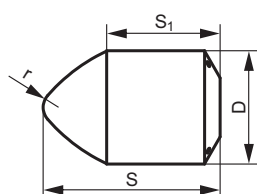
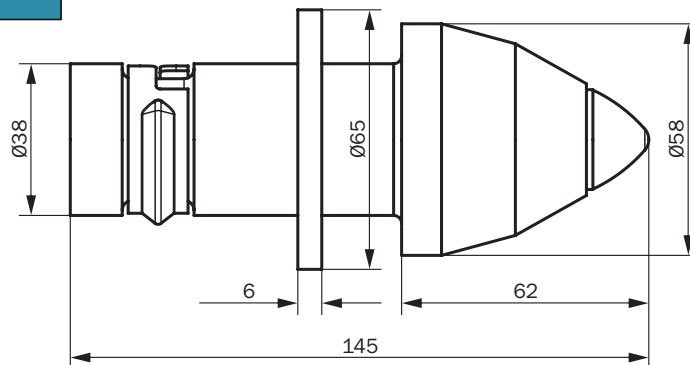
Ordering code	Grades				Dimensions			
	C08				S ₁	D	S	r
C3-00	●				16.4	22.0	29.0	1.8

CD-3022-C3-25



Ordering code	Grades				Dimensions			
	C08				S ₁	D	S	r
C3-00	●				16.4	22.0	29.0	1.8

CD-3825-C4-10



Ordering code	Grades				Dimensions			
	C08				S ₁	D	S	r
C4-00	●				25.0	25.0	39.0	4.0

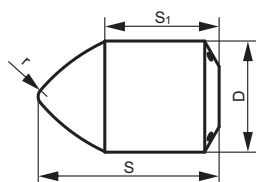
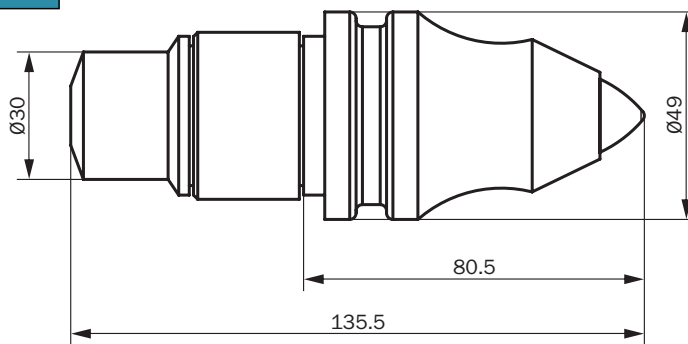
G

G
d1

SURFACE REMOVING TOOLS

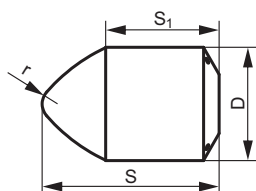
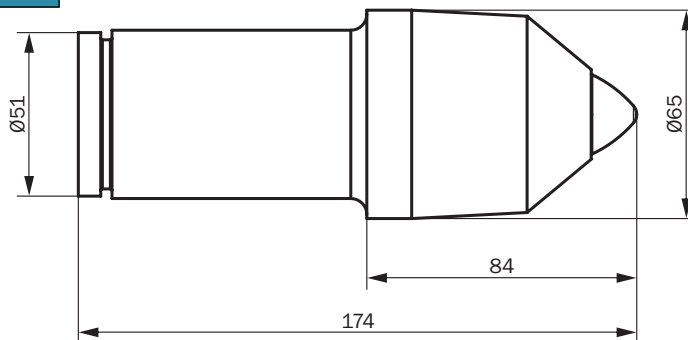
G.d Picks for mining

CD-3318-C4-12



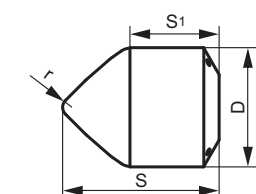
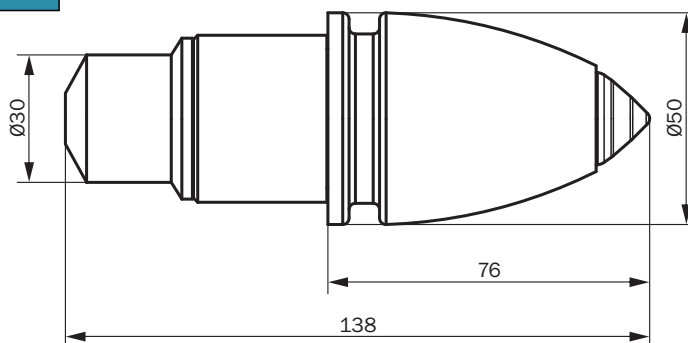
Ordering code	Grades				Dimensions			
	C08				S_1	D	S	r
C4-01	●				18.0	17.5	28.5	1.5

CD-5225-C4-12



Ordering code	Grades				Dimensions			
	C08				S_1	D	S	r
C4-00	●				25.0	25.0	39.0	4.0

CD-3322-C3-02



Ordering code	Grades				Dimensions			
	C08				S_1	D	S	r
C3-00	●				16.4	22.0	29.0	1.8

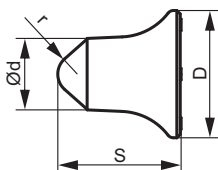
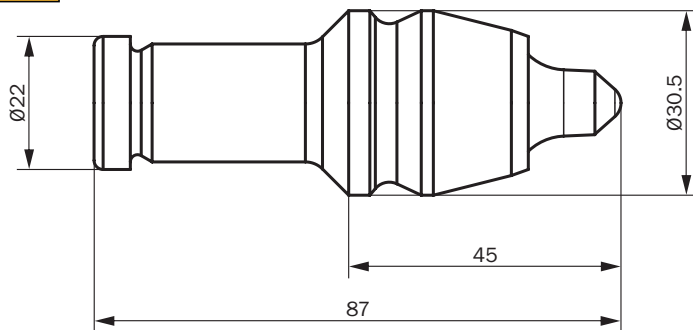
G

G
d2

SURFACE REMOVING TOOLS

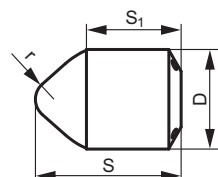
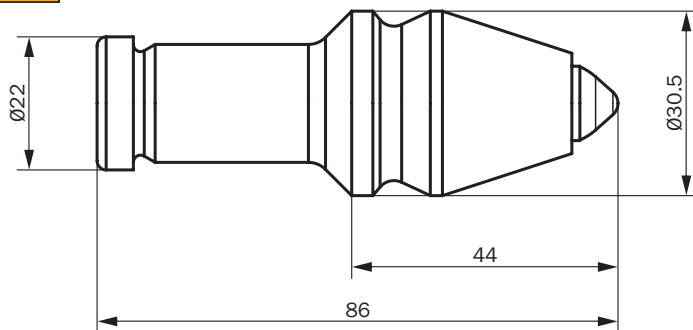
G.e Picks for canal digging

CD-2019-C1-05



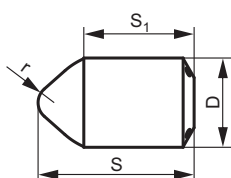
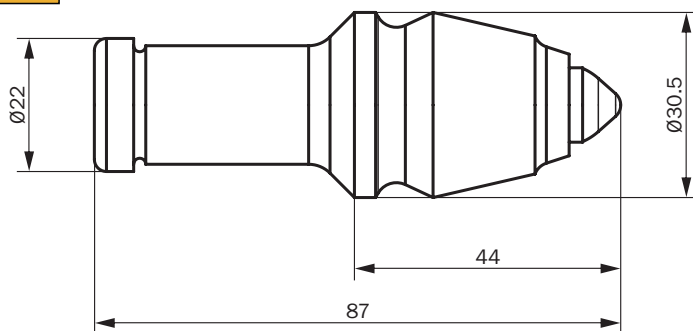
Ordering code	Grades				Dimensions			
	C08				Ød	D	S	r
C1-00	●				10.5	18.7	18.0	3.0

CD-2019-C2-04



Ordering code	Grades				Dimensions			
	C08				S ₁	D	S	r
C2-00	●				11.7	12.0	18.0	2.5

CD-2012-C2-09



Ordering code	Grades				Dimensions			
	C08				S ₁	D	S	r
C2-01	●				15.2	12.0	21.5	2.5

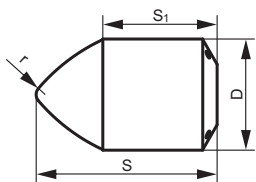
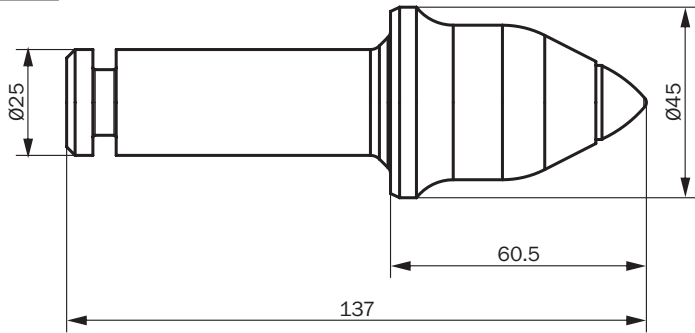
G

G
e1

SURFACE REMOVING TOOLS

G.e Picks for canal digging

CD-2518-C4-08

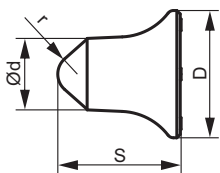
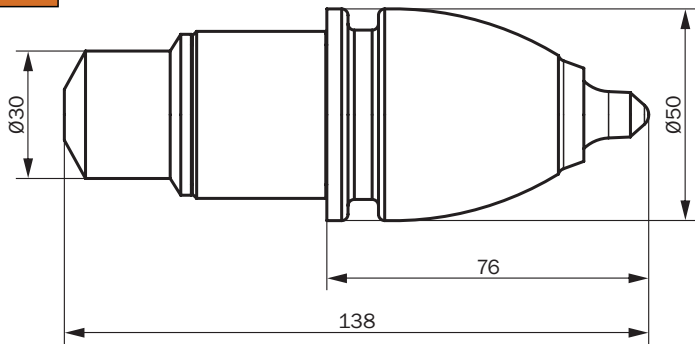


Ordering code	Grades				Dimensions				
	C08				S_1	D	S	r	
C4-01	●				18.0	17.5	28.5	1.5	

SURFACE REMOVING TOOLS

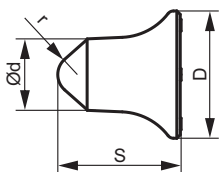
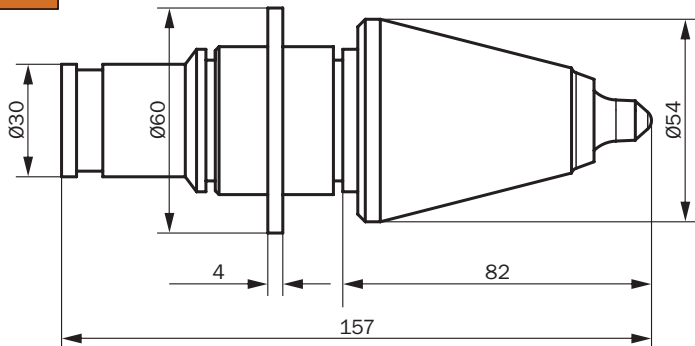
G.f Picks for digging of loose materials

CD-3319-C1-02



Ordering code	Grades				Dimensions			
	C08				$\varnothing d$	D	S	r
C1-00	●				10.5	18.7	18.0	3.0

CD-3219-C1-03



Ordering code	Grades				Dimensions			
	C08				$\varnothing d$	D	S	r
C1-00	●				10.5	18.7	18.0	3.0

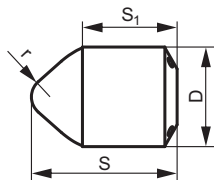
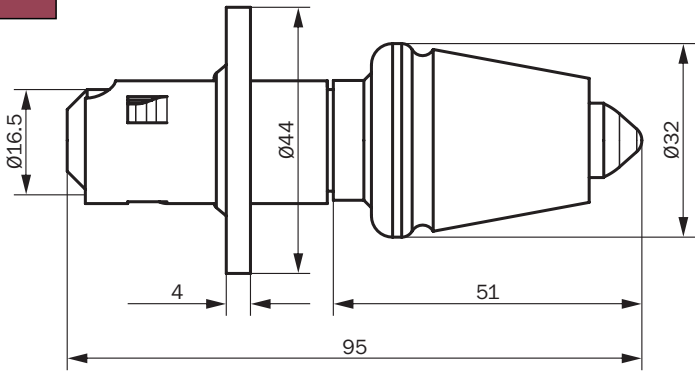
G

G
f1

SURFACE REMOVING TOOLS

G.g Picks for concrete removing

CD-1719K-C2-14W

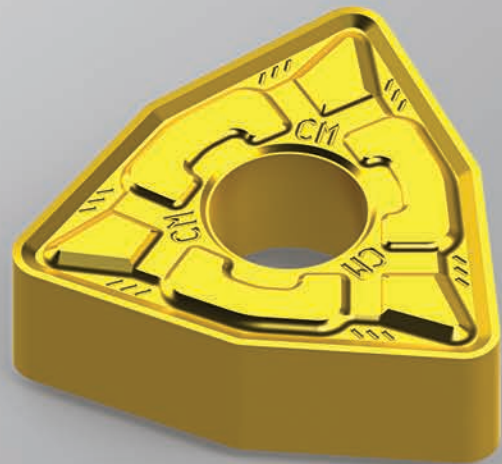


Ordering code	Grades				Dimensions			
	C08				S_1	D	S	r
C2-00	●				11.7	12.0	18.0	2.5

CORUN HOLDING d.o.o.

Miloša Obrenovića, Suite 2
Užice, Serbia 31000

phone: +381 31 / 563 344
fax: +381 31 / 563 461
e-mail: corunad@yahoo.com
SALES DEPARTMENT
phone: +381 31 / 563 391
fax: +381 31 / 563 391
e-mail: sales@corun.rs
MARKETING
phone: +381 31 / 563 391
fax: +381 31 / 563 391
e-mail: marketing@corun.rs
DEVELOPMENT
phone: +381 31 / 563 400
e-mail: development@corun.rs



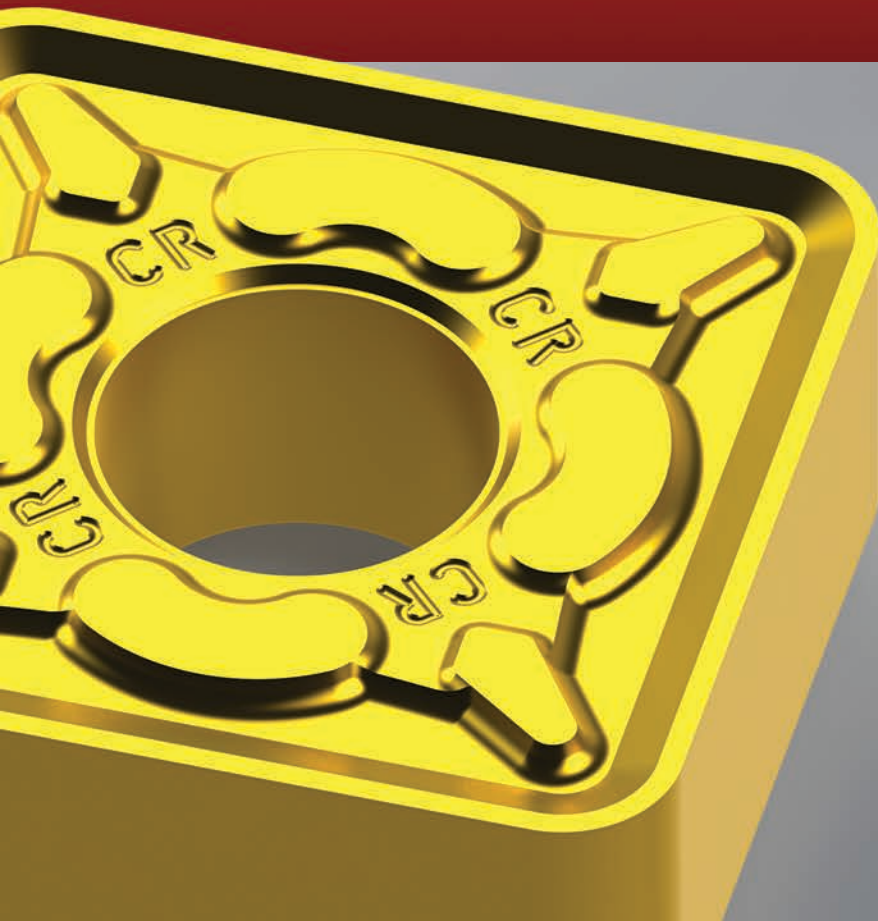
ABOUT COMPANY

CORUN HOLDING d.o.o. Užice, Serbia is factory for production of cemented carbide indexable inserts, toolholders, milling cutters and other special cutting tools based on cemented carbide.

Also, we produce tools for road and mining industry (picks for asphalt removing, cutters for canal digging, mining drill for deep hole drilling), as well as tools for cold heading and forming (cemented carbide dies for forging, pulling, squeamishing - all with corresponding pins).

CORUN HOLDING d.o.o has their own development and construction bureau, so we have a opportunity to give our customers complete technological answers for all problems in cutting industry.

One of the main target of **CORUN HOLDING** d.o.o. company is to be available all the time for our customers worldwide and to respond on all of Yours requests as soon as possible in order to make the best solutions together.



CORUN

WWW.CORUN.RS